



bfm SEATING

CATALOG

CHAIRS

BARSTOOLS

STACKING CHAIRS

TABLES

OUTDOOR FURNITURE



WWW.BFMSEATING.COM

OFFICE: (215) 289-5411

FAX: (215) 289-5420

**2080 WHEATSHEAF LANE
PHILADELPHIA, PA 19124**

See catalog pages for available chair finishes

WOOD FINISH OPTIONS



Black



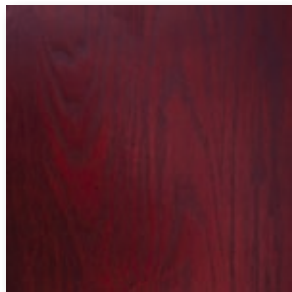
Cherry



Honey Oak



Royal Mahogany



Dark Mahogany



Light Mahogany



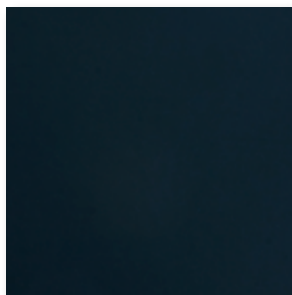
Natural



Walnut

See catalog pages for available chair finishes

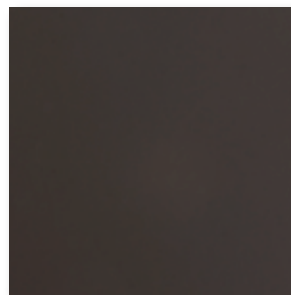
METAL FINISH OPTIONS



Gloss Black (611)



Sand Black (616)



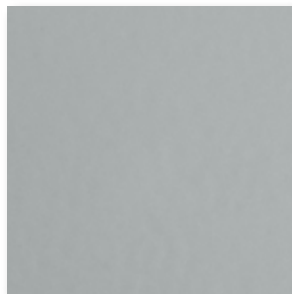
Brown (614)



Gold (612)



Gold Vein (618)



Silver (613)



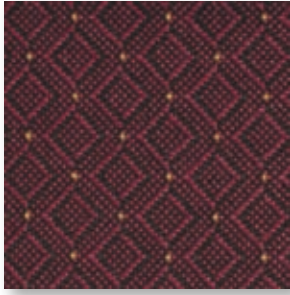
Silver Vein (617)



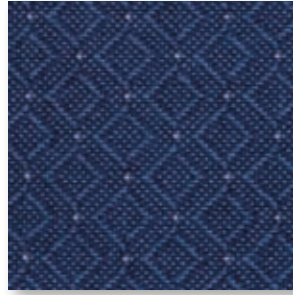
Matte Black (619)

See catalog pages for available seat options

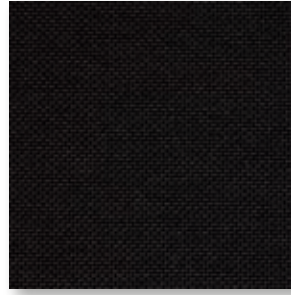
Stock Cloth Seat Options



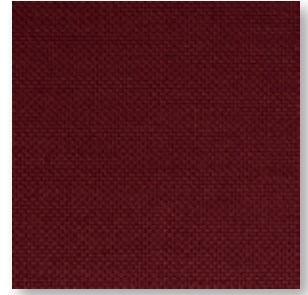
Burgundy (BUP 16)



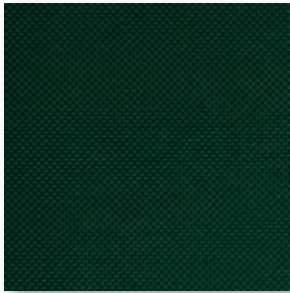
Navy (NBP 17)



Black (BLC 1)



Burgundy (BUC 2)



Green (HGC 5)

See catalog pages for available seat options

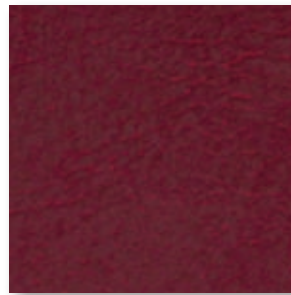
Stock Vinyl Seat Options



Black (BLV 12)



Brown (BRV 2)



Burgundy (BUV 6)



Green (GNV 14)



Light Brown (LBV 22)



Red (RDV 4)

Orders

All orders, order changes or cancellations should be placed in writing by fax or e-mail. Cancellations on chairs that have been assembled are subject to a 25% restocking charge. Orders will not be held more than 30 days from ship date specified on purchase order and are subject to above restocking charge. Customers are responsible for any and all costs expended by BFM for changes or cancellations including but not limited to special upholstery, production and labor costs.

Returns

Merchandise cannot be returned without a written return authorization. Approved returns are subject to a minimum 25% restocking charge. Freight out and return freight will be the customer's responsibility. Return will be approved upon inspection of goods returned. Freight and Freight Claims: BFM will ship by our carrier unless instructed otherwise on purchase order. All shipments are FOB our Philadelphia warehouse. PO must specify Prepaid and Add, Third Party or Freight Collect. It is the responsibility of the consignee to inspect the goods upon arrival. For Third Party shipments or any other shipments not shipped on preferred BFM carrier freight claims become the responsibility of the dealer or consignee or for goods not inspected upon arrival.

Terms and Conditions

Credit terms are established on an individual basis. Special orders require a 50% deposit. Product not picked up or shipped within 30 days need to be paid for in full to continue to be held. Product held beyond 60 days will incur a 1.5% storage charge per month beginning on the 61st day. Canceled orders that have been assembled are subject to a minimum 25% restocking charge plus any material and labor charges not covered by the minimum restock charge.

Product Care

Product should be inspected on a regular basis for loose screws, glides, cracked or broken welds, cracked laminate, or any other irregularities.

- Teak: May be allowed to weather naturally and will turn grey. To keep original color teak cleaner and teak oil may be used.
- Metal: Use a damp cloth. For grease and other stains use a combination of mild soap and water.
- Wood: Coat with hard paste wax every few months for the first year and then as needed thereafter. Liquid spills should be cleaned up immediately. A liquid wood cleaner/wax product should be used for general cleaning. Do not use any solvents, abrasive or other harsh cleaners.
- Upholstery: Vinyls may be cleaned with mild soap and water or vinyl cleaner (do not use any ammonia or chlorine products). For fabric upholstery verify cleaning procedure with manufacturer of the fabric or check with us.
- Laminated Table Tops: Use mild soap and water (do not use any ammonia or chlorine products).

Warranty

Wood chair frames have a 1-year warranty on construction. Metal chair frames have a 5-year warranty on construction. Outdoor furniture has a 3-year warranty on construction. All warranties are subject to the following:

- Consumer properly assembling KD items.
- Product is subject to normal use. Indoor furniture may not be subject to outdoor use or extremes in temperature and humidity. Outdoor furniture may not be subject to winter weather elements. Upholstery is not covered by the above warranty. Any upholstery warranty is governed by the upholstery manufacturer. Warranty does not cover freight damage.
- For any reason if any product is to be returned a return authorization must be obtained before returning. Any product returned without a return authorization will be refused and all shipping costs will be the responsibility of the shipping party.

We reserve the right to update products without notice.